



GOC

Consulting and Engineering



Portfolio
Railways
2021

At GOC we are characterized by our proven professional independence, commitment to the client's objectives and a proven ability to provide solutions in all types of situations.

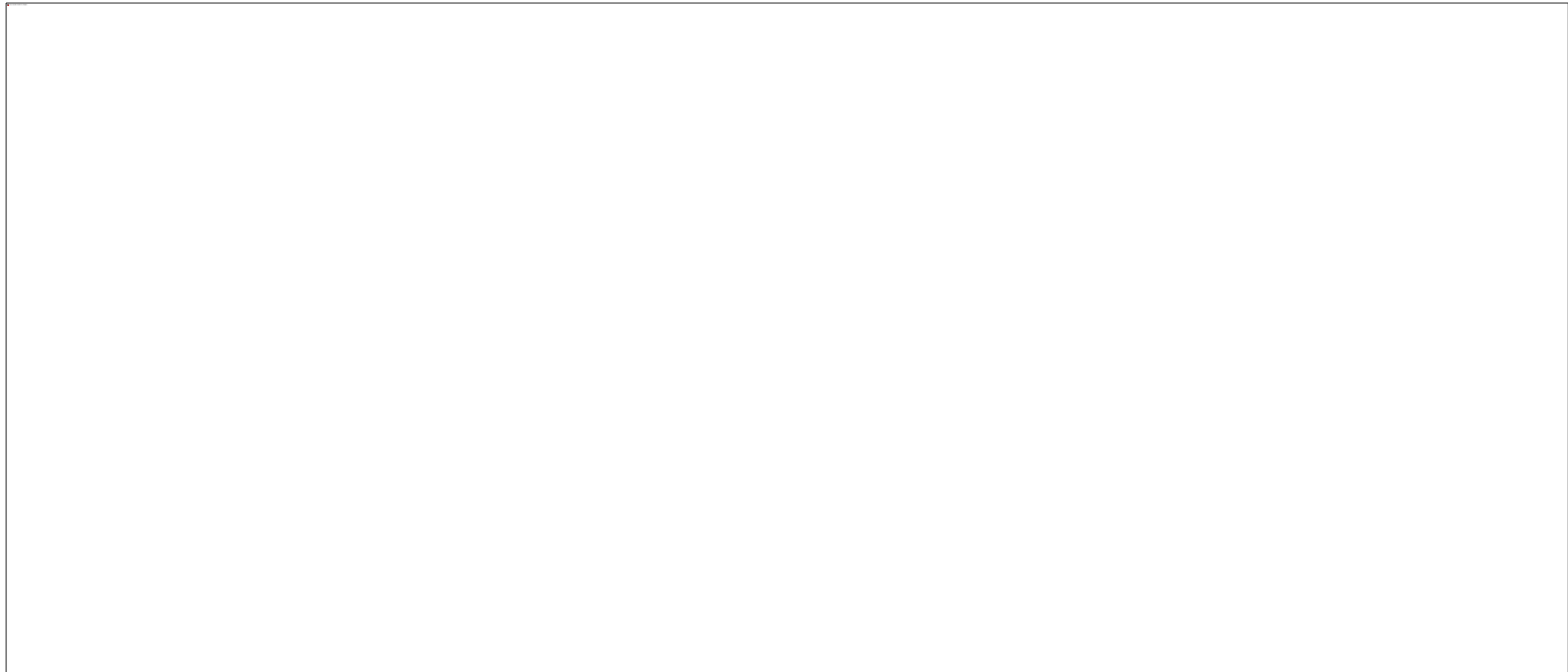
Our commitment to quality in all processes and innovation is reflected in the certifications that have accredited GOC uninterruptedly since 1995, being one of the pioneering companies in the sector.



- Design
- Supervision
- Consulting
- Management



NAFAV to Levante. Section: Access to Albacete



- **Investment:**
60 M€
- **Length:**
7.3 km
- Includes:**
 - 3 overpasses
 - 1 underpass
 - 1 pedestrian walkway
 - Modification and adaptation of the rail yard of the Albacete Station

- Infrastructures
- Railways
- Spain
- Supervision



HS Madrid-Extremadura line. Section: Casar de Cáceres-Cáceres



- **Investment:**
20 M€
- **Length:**
7.2 km
- Includes:**
 - 4 overpasses
 - 7 underpasses
 - 13 drainage Works
 - UIC international gauge double electrified track



- Infrastructures
 - Railways
 - Spain
- Supervision



H.S.L. Madrid-Barcelona-France.

Section: Riudecanyes-Est. Vila Seca



▪ Investment:
71.6 M€

▪ Length:
14 km

Includes:

- 2 viaducts
- 3 axis
- Overpasses
- Underpasses



- Infrastructures
- Railways
- Spain
- Supervision



Barcelona-Puigcerdá line. Section: Ripoll-Puigcerdá – French border



▪ **Investment:**
50.2 M€

▪ **Length:**
50.2 km

Includes:

- Track renovation and platform treatment
- 2 Tunnels (4,925 m) with waterproofing and reinforcement
- 5 stations and 3 halts with modification of track diagrams

• Infrastructures

• Railways

• Spain

• Supervision



High Speed Atlantic Axis. Section: Padrón-Osebe (A Coruña)



▪ **Investment:**
26.2 M€

▪ **Length:**
3.8 km

Includes:

- High Speed Line 220 km/h
- 1 tunnel (865 m) for double track
- 4 overpasses
- 1 underpass
- 1 viaduct
- 1 pergola for passage of N550

• Infrastructures

• Railways

• Spain

• Supervision



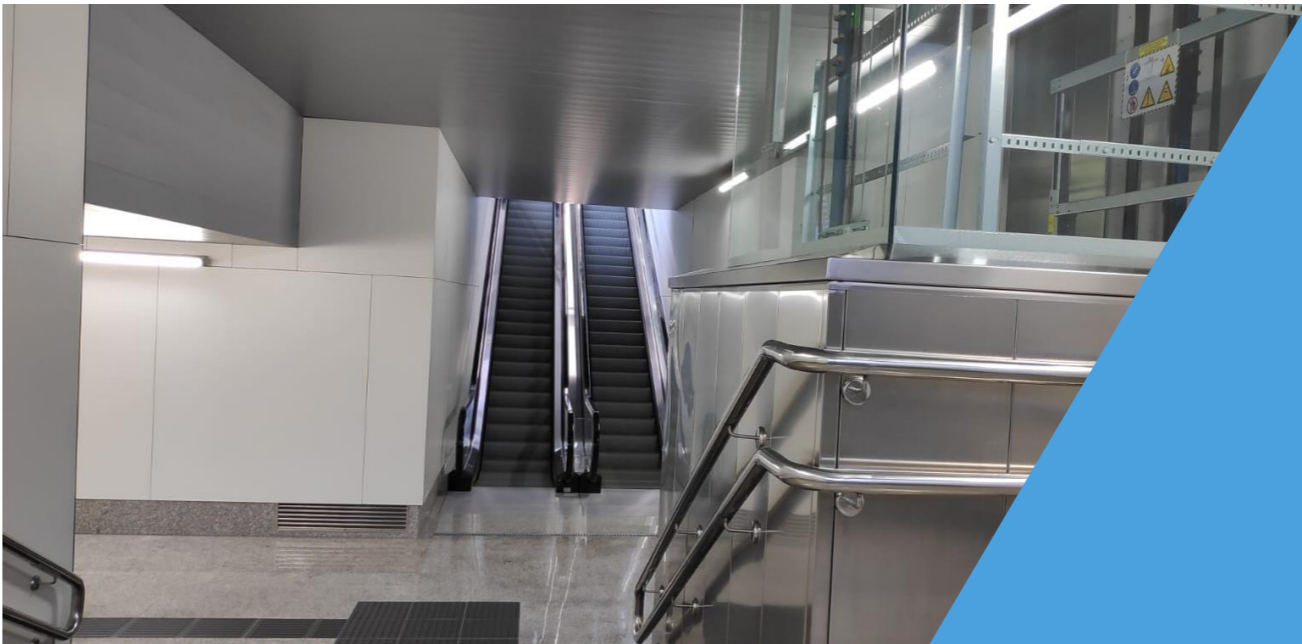
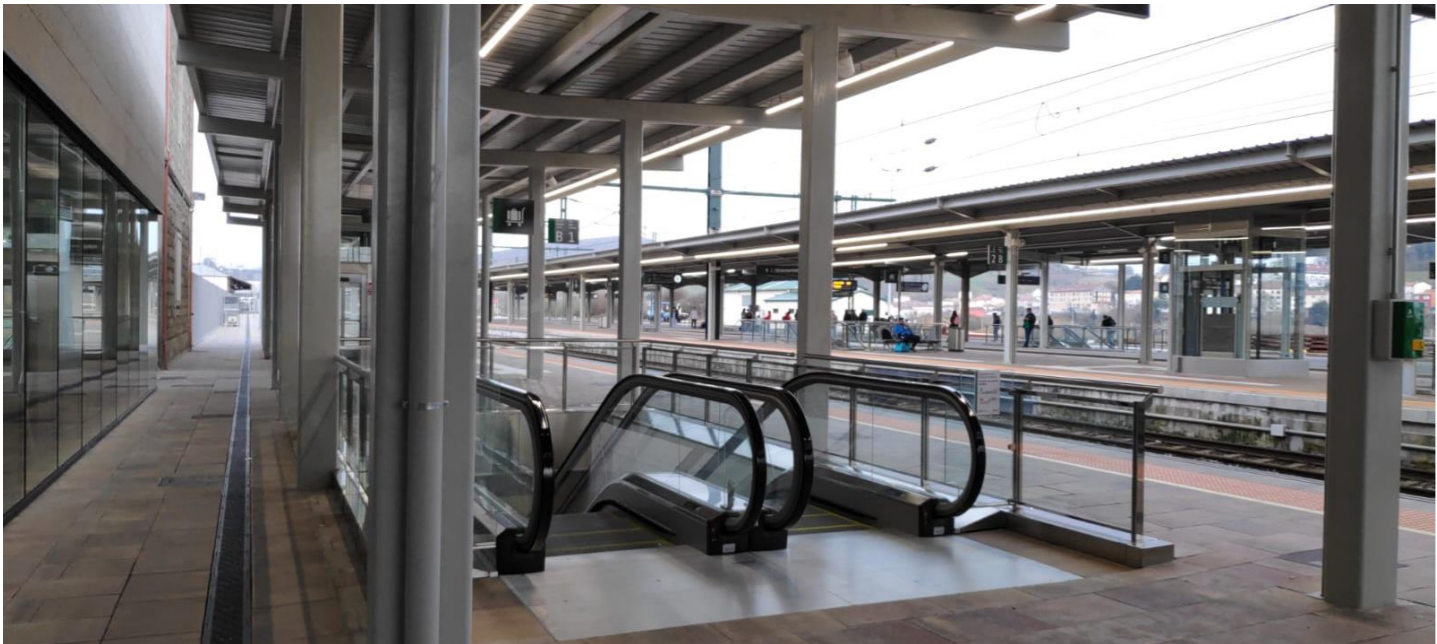
Adaptation of the Santiago Station to new High-Speed services



▪ Investment:
10.3 M€

Includes:

- Expansion of passenger building
- Adaptation of track yard and platforms
- Underpass between platforms
- Marquee. Replacement of roof, replacement of facilities, repair of latticework
- Electrification and railway installations
- Urbanization roads and parking



- Infrastructures
- Railways
- Spain
- Supervision



Atlantic axis HS. Maintenance workshops of rolling stock in Redondela



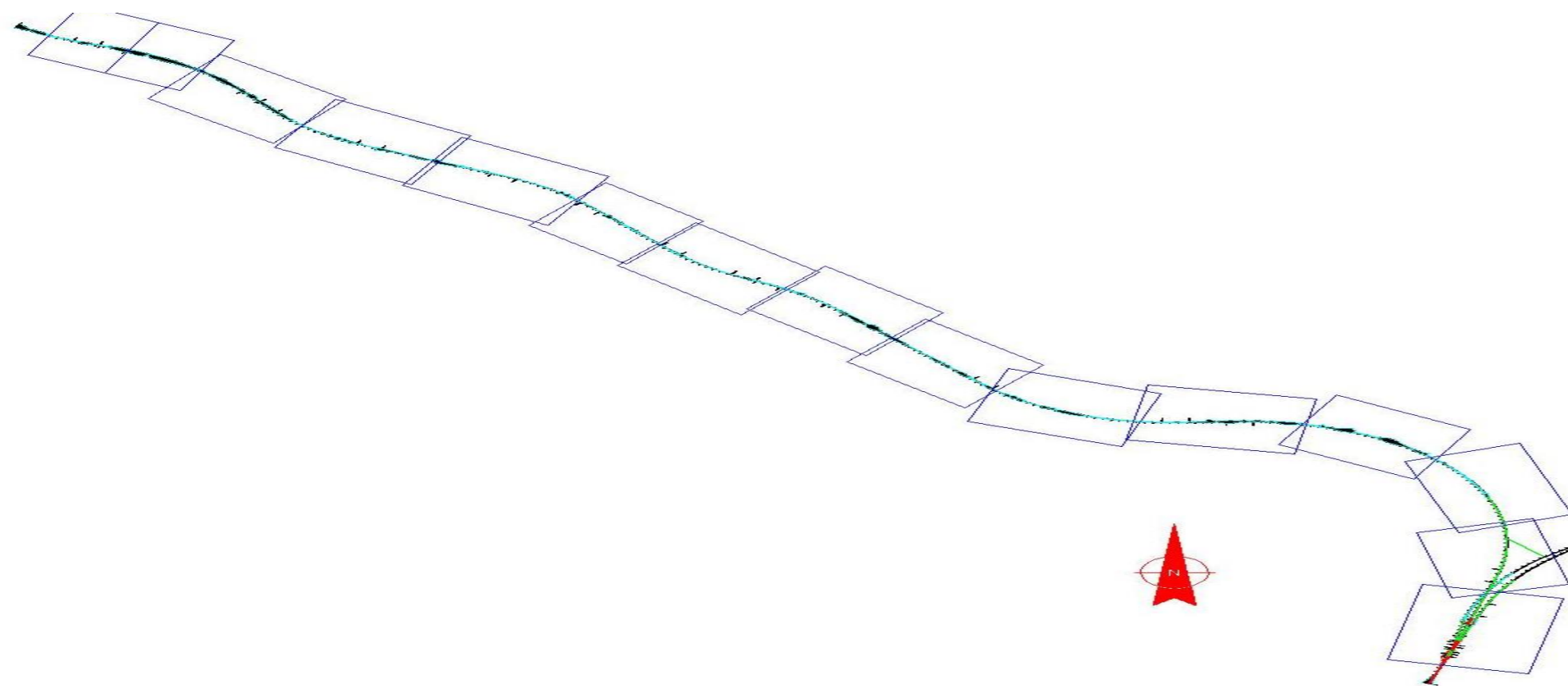
- **Investment:**
12 M€
- **Dimensions of the building:**
210 m x 28 m x 9 m
- **Includes:**
 - Metallic structure of 4 attached modules structurally separated
 - Pile foundation
 - 4 way
 - Specific equipment



- Infrastructures
- Railways
- Spain
- Supervision



High Speed Line Vitoria-Bilbao-San Sebastián. Section: Mondragón-Amorebieta/Etxano



- Investment: 305.9 M€
- Length: 26.3 km
- Includes:
 - Drafting of basic platform project
 - 12 viaducts (3,410 m)
 - 15 tunnels (11,450 m)

- Infrastructures
- Railways
- Spain
- Design

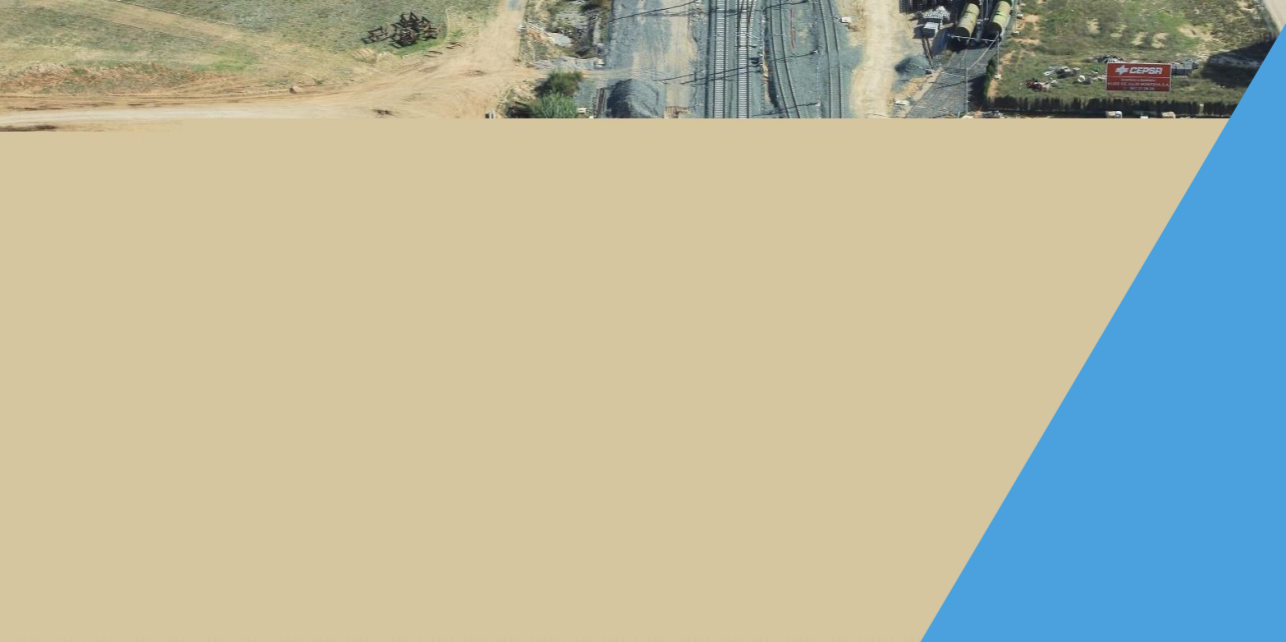


NAFAV to the Levant. Section: Access to Albacete



- **Investment:**
70.2 M€
- **Length:**
7.3 km
- Includes:**
 - Drafting of basic platform project
 - 5 overpasses
 - 1 underpass under Albacete station platforms

- Infrastructures
- Railways
- Spain
- Design



HSL Madrid-Extremadura. Section: Plasencia-Arroyo de la Charca Station



▪ Investment:
29.5 M€

▪ Length:
6.4 km

Includes:

- Platform project writing
- 4 viaducts (491 m)
- 1 overpass
- 2 underpasses



• Infrastructures

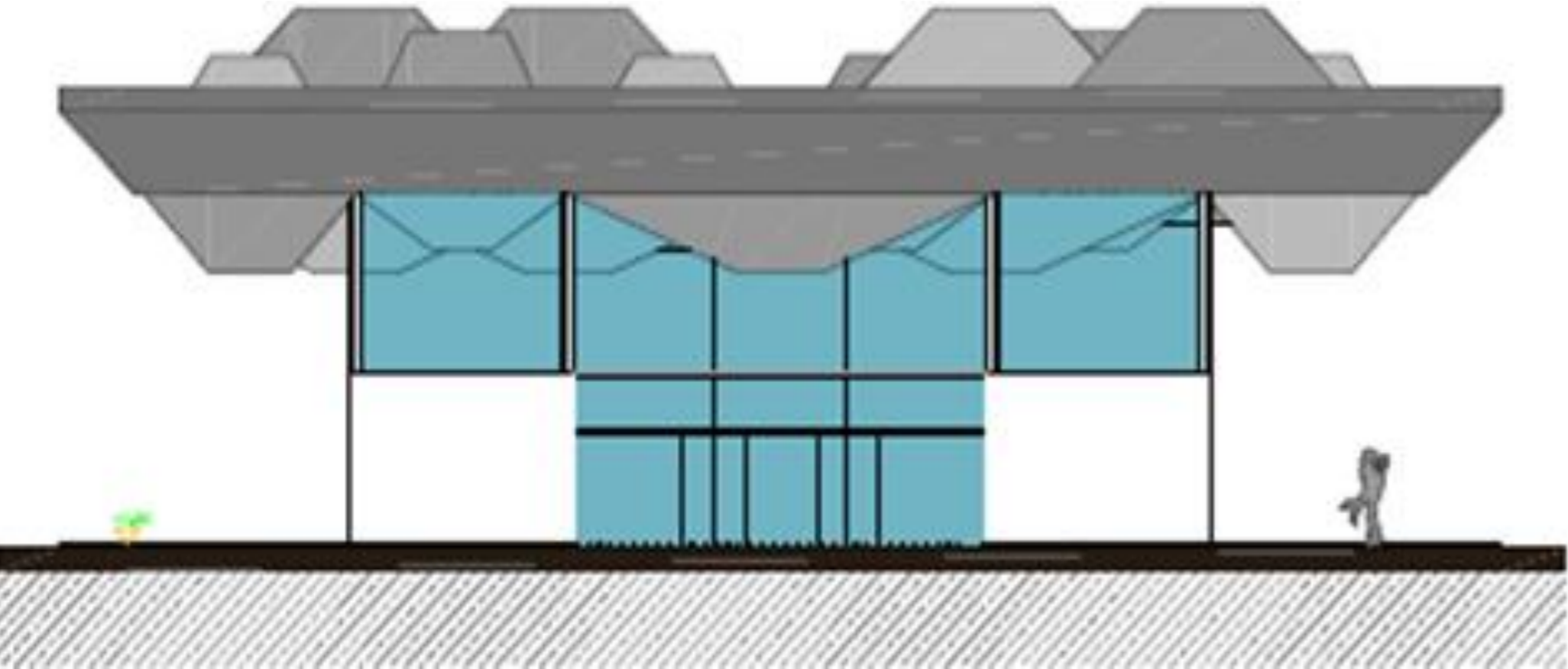
• Railways

• Spain

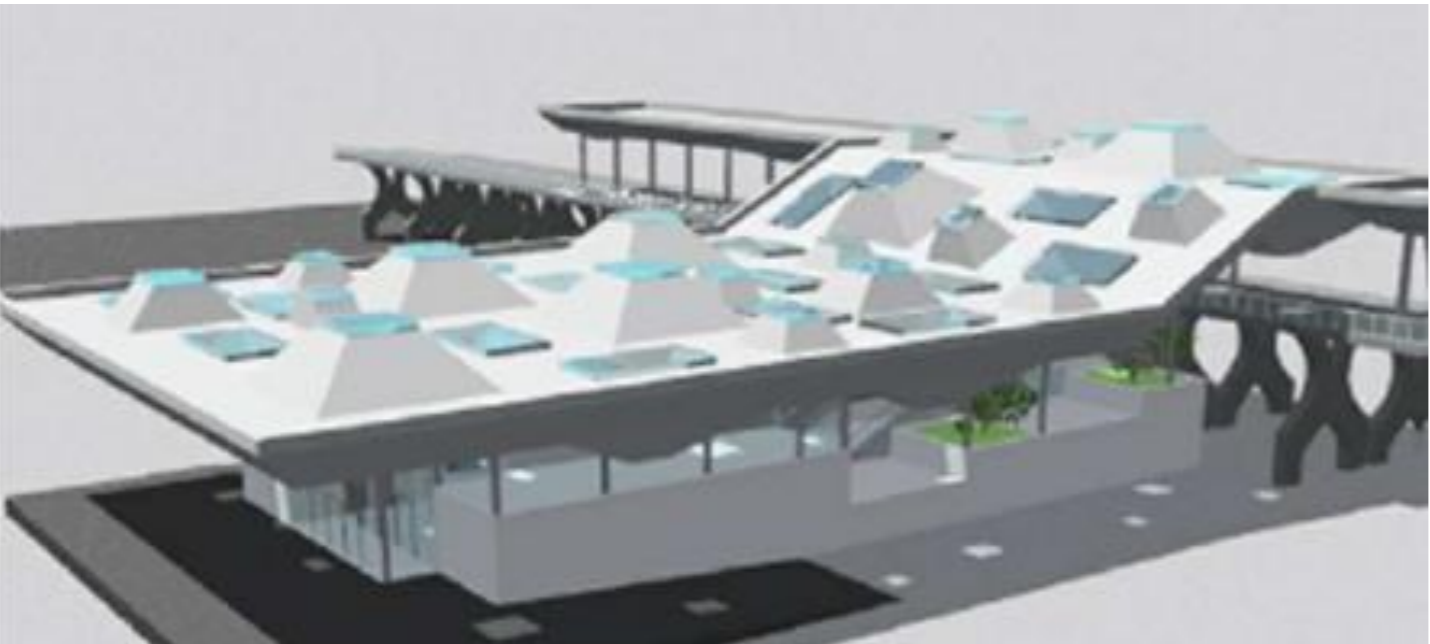
• Design



HS Mediterranean Corridor. Section: Murcia-Almería. Subway: Librilla-Alhama



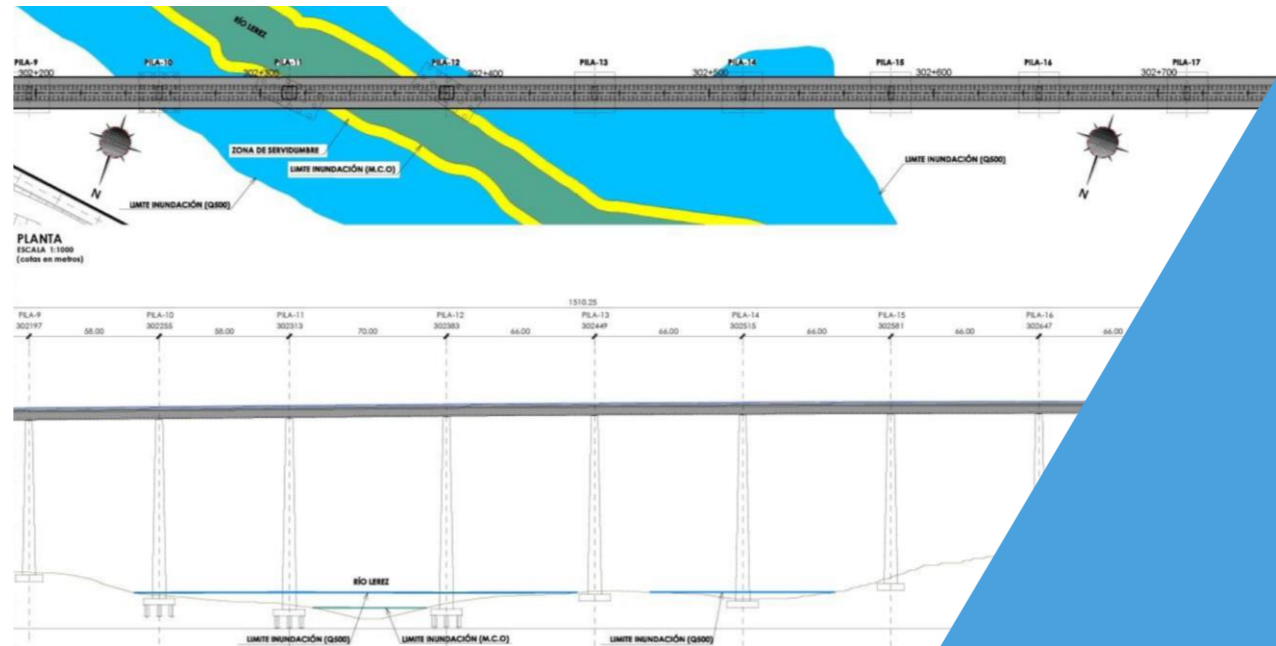
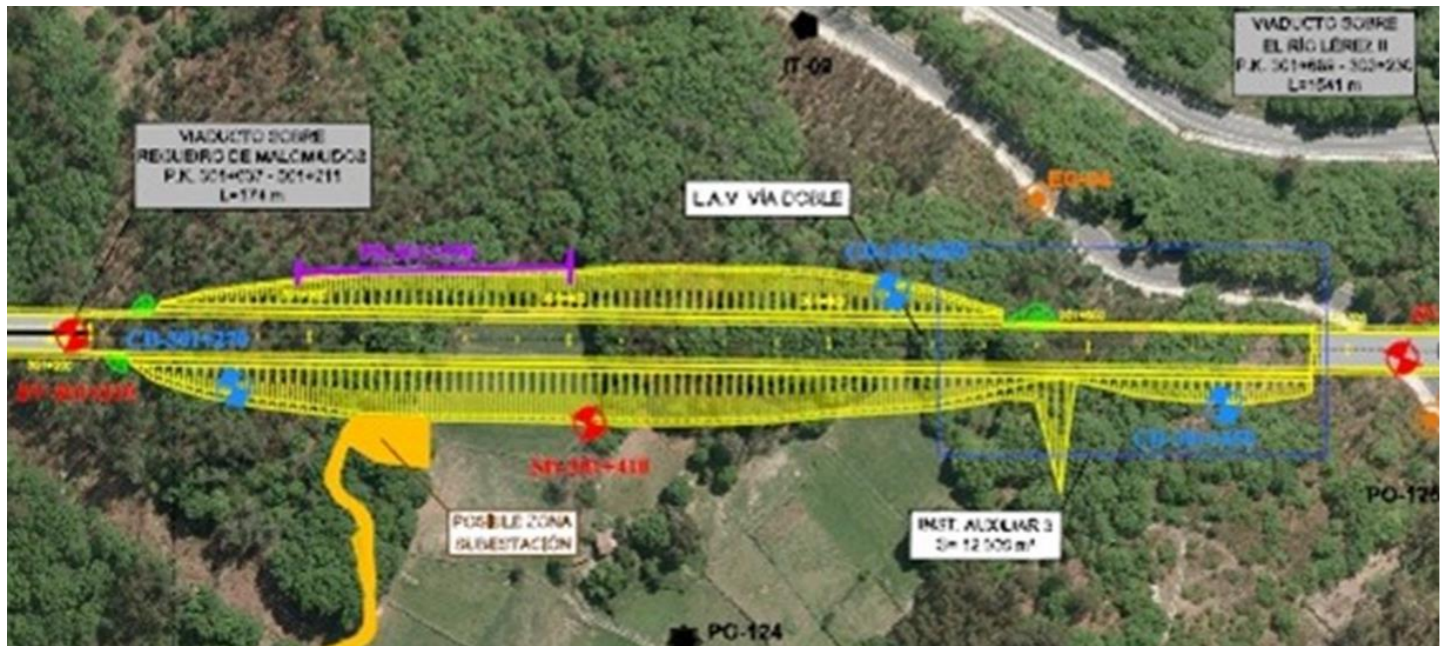
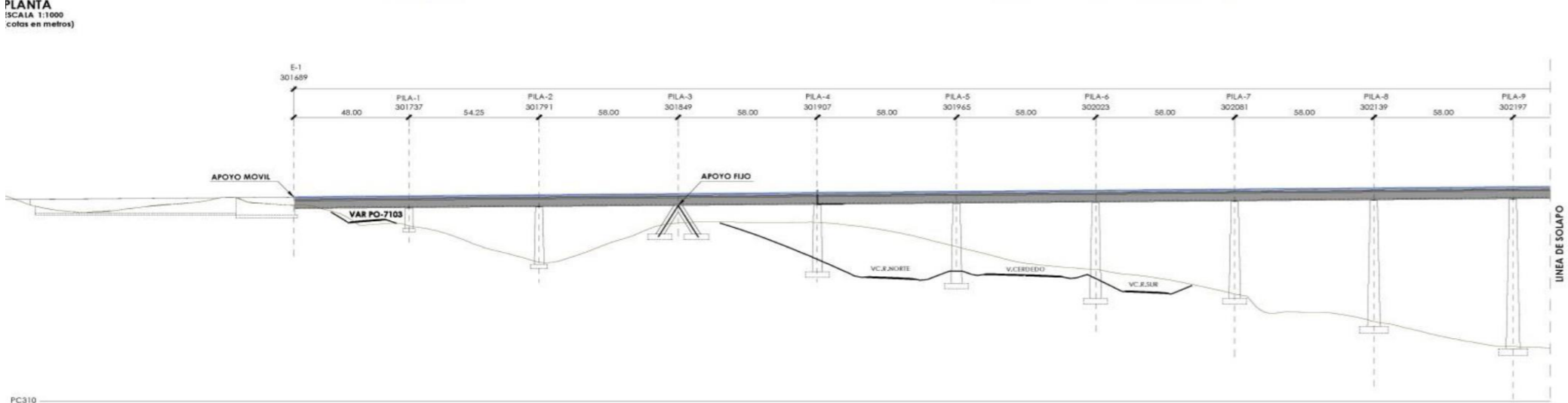
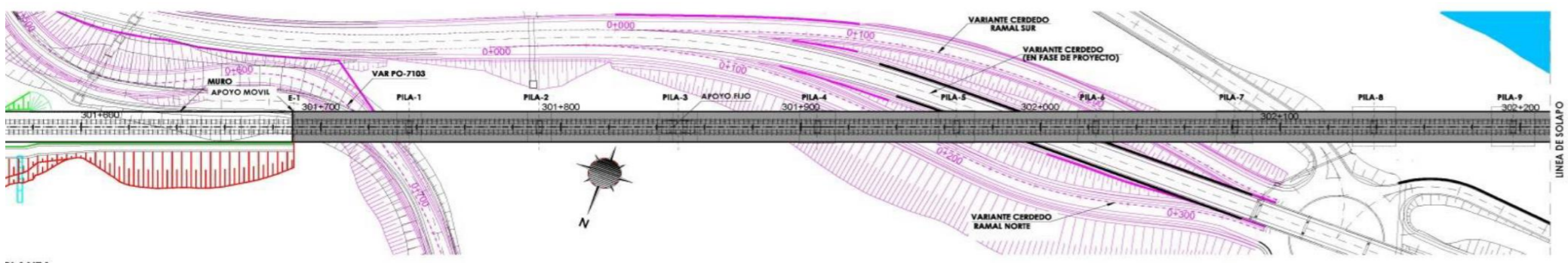
- **Investment:**
199.8 M€
- **Length:**
12 km
- **Includes:**
 - Platform project writing
 - 2 stations (Librilla and Alhama)
 - 4 viaducts (2,355 m)
 - 8 overpasses
 - 1 pass under the A-7
 - 6 underpasses



- Infrastructures
- Railways
- Spain
- Design



Ave line to Galicia. Section: Ourense-Vigo. Subway: Cerdedo-Barro



Investment:
859 M€

Length:
24.5 km

Includes:

- Drafting of platform project (width 14 m) for high-capacity track of UIC gauge
- 4 tunnels (7,680 m monotube and 16,866 m twin-tube)
- 10 viaducts (5,600 m)
- 1 pergola

• Infrastructures

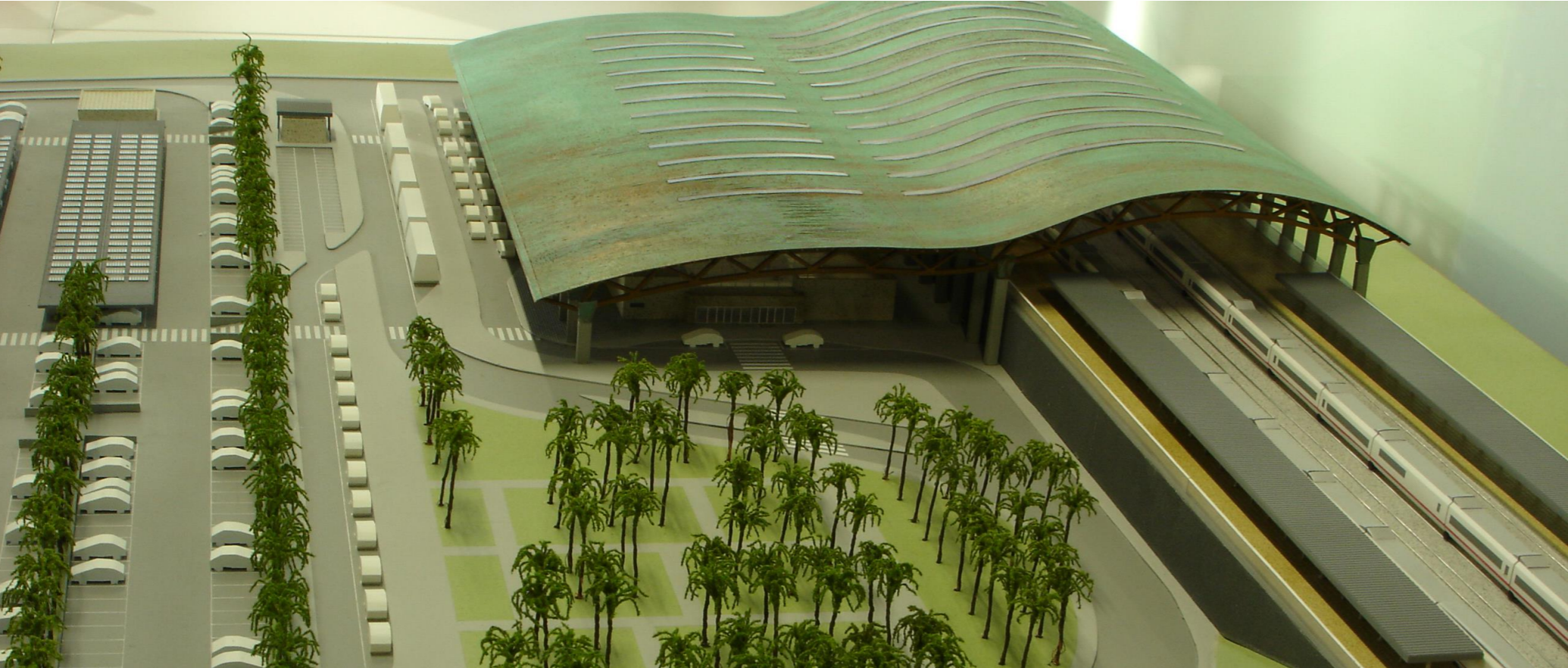
• Railways

• Spain

• Design



New High-Speed Station Elche/Elx



▪ Investment:
25 M€

▪ Superficie construida:
4,200 m²

Includes:

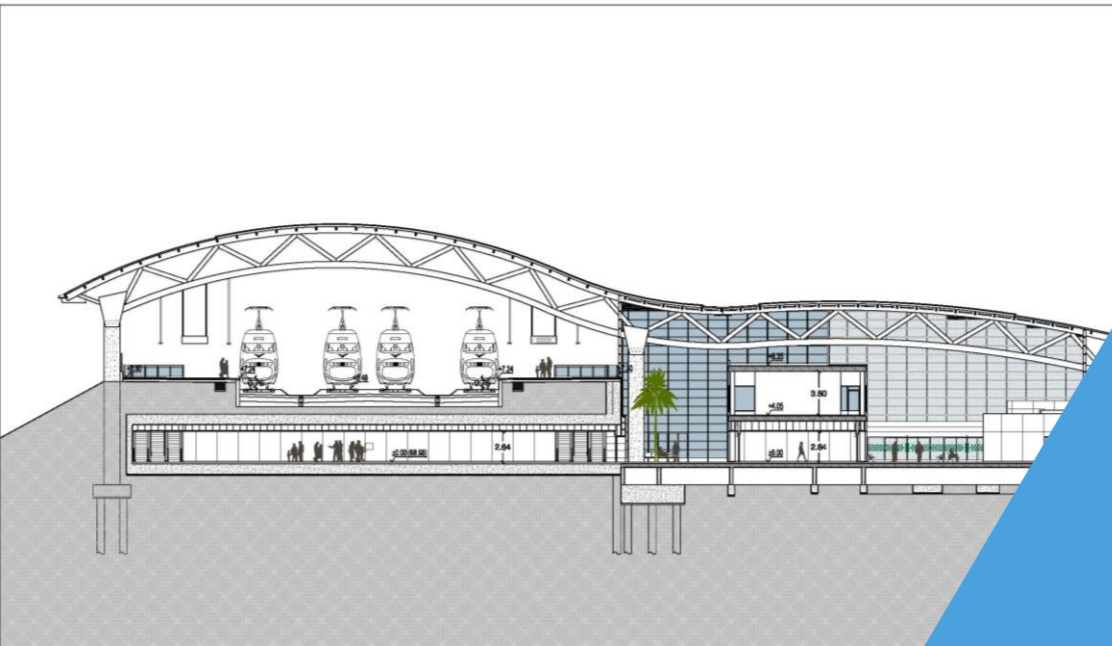
- Drafting of the station construction project
- Platforms and connection between them
- Parking for 500 spaces
- Outer urbanization
- Access road

• Infrastructures

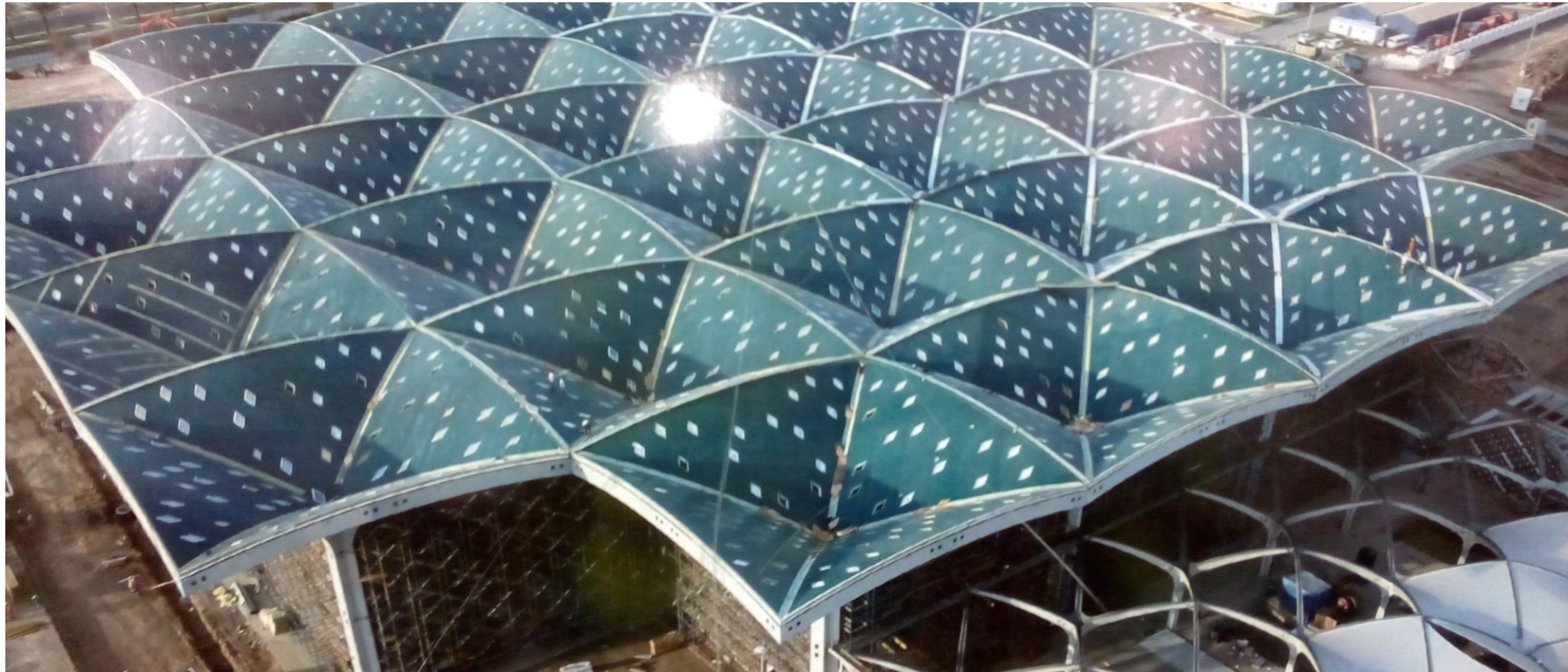
• Railways

• Spain

• Design



Stations of the Mecca-Medina High Speed line. Saudi Arabia



- **Investment:**
7,000 M€
- **Length:**
450 km
- Includes:**
 - Service for 160,000 pilgrims/day, capable of a potential demand of 60 million travelers/year.



- Infrastructures
 - Railways
- Saudi Arabia
- Supervision



Railway in the sections: La Dorada - Chiriguaná and Bogotá - Belencito



- **Investment:**
13.9 M€
- **Length:**
521.2 km
- **Includes:**
 - Bridges: Tolones, Cocorná, Carare, Opón, Cuatro Bocas, Ciénaga de San Silvestre, Sogamoso, Lebrija and El Hoyo.
 - Sewer construction
 - Dissipation works on the Acapulco Branch
 - Stabilization works.

- Infrastructures
- Railways
- Colombia
- Intervention





www.gocsa.es

www.gocsa.es



GOC
Consulting and Engineering