



**GOC**

Consulting and Engineering

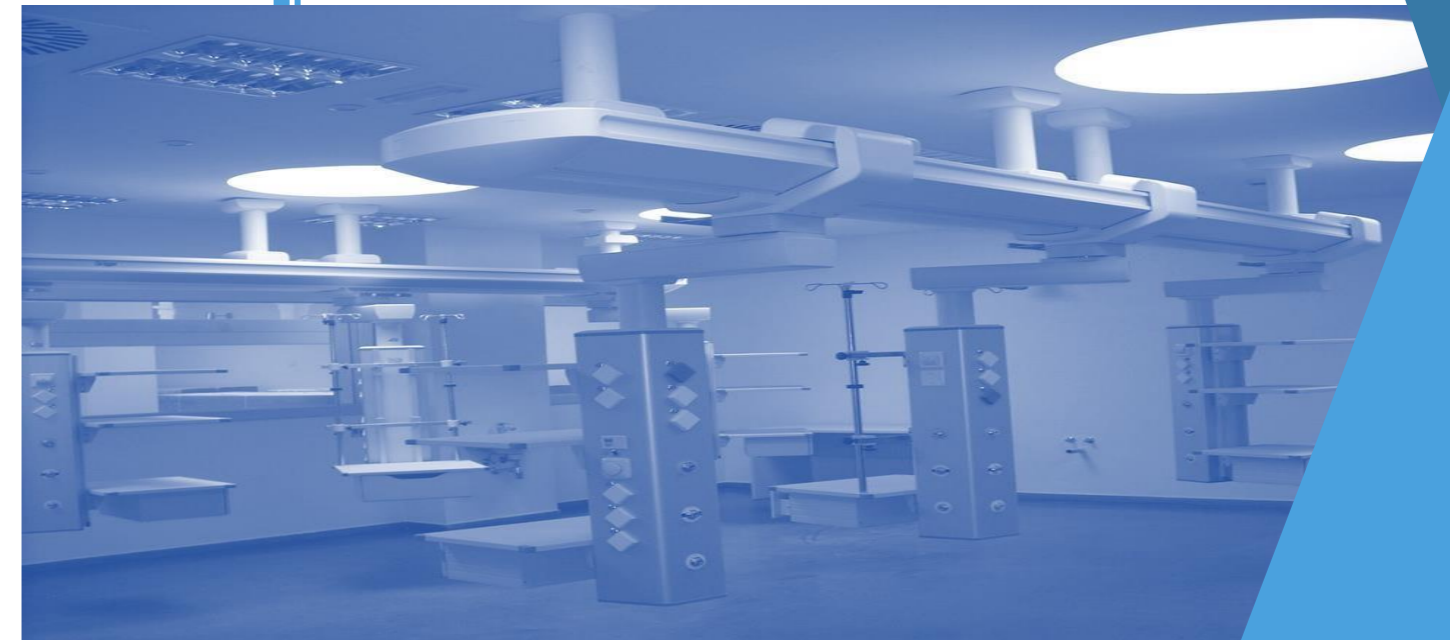
Portfolio  
**Hospitals**

2021

At GOC, we are characterized by our proven independence

professional, committed to our client's objectives and a proven ability to provide solutions in all kinds of situations.

Our commitment to quality in all processes and to innovation is reflected in the certifications that accredit GOC uninterruptedly since 1995, being one of the companies Pioneers in the sector.



- Design
- Supervision
- Consulting
- Management



# Lucus Augusti University Hospital HULA (Lugo)



▣ Investment:  
139 M€

▣ Surface Area:  
127.000 m<sup>2</sup>

Includes:  
▣ 717 beds



- Health
- Hospitals
- Spain
- Building
- Management

# Logroño Hospital



▣ Investment:  
167 M€

▣ Surface Area:  
126.000 m<sup>2</sup>

Includes:  
▣ 664 beds



- Health
- Hospitals
- Spain
- Buildings
- Management

# National Research Center Cardiovascular - CNIC (Madrid)



▣ Investment:  
11 M€

▣ Surface Area:  
9.600 m<sup>2</sup>

Includes:

- ▣ **Animalarium** and imaging laboratory
- ▣ Human cardiovascular research Laboratory
- ▣ Installations for radiology and magnetic protection
- ▣ 205 Parking lots

- Health
- Hospitals
- Spain
- Building
- Management



# 7 new hospitals in the Community of Madrid



- Investment: 600 M€
- Total Surface Area 539.600 m<sup>2</sup>

- Includes:
- H. del Norte en SS de los Reyes
  - H. Puerta de Hierro en Majadahonda
  - H. del Henares en Coslada
  - H. de Vallecas
  - H. Sureste en Arganda del Rey
  - H. del Sur en Parla
  - H. del Tajo en Aranjuez



- Health
- Hospitals
- Spain
- Building
- Consulting

# University Hospital Complex of Ourense



Investment:  
52 M€

Surface Area:  
53.941 m<sup>2</sup>

Includes:  
428 beds



- Health
- Hospitals
- Spain
- Building
- Design and Supervision

# Muprespa Fraternity Hospital (Madrid)



▣ Investment:  
19,3 M€

▣ Surface Area:  
15.000 m<sup>2</sup>

Includes:  
▣ 50 beds



- Health
- Hospitals
- Spain
- Building

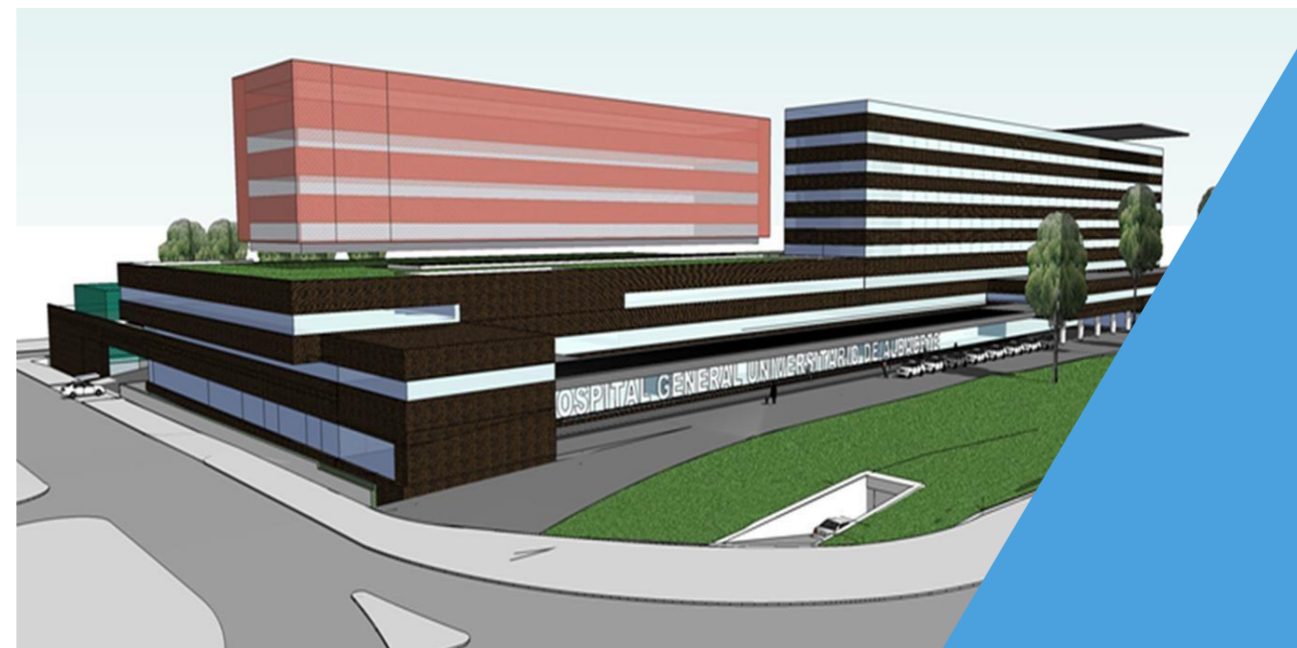
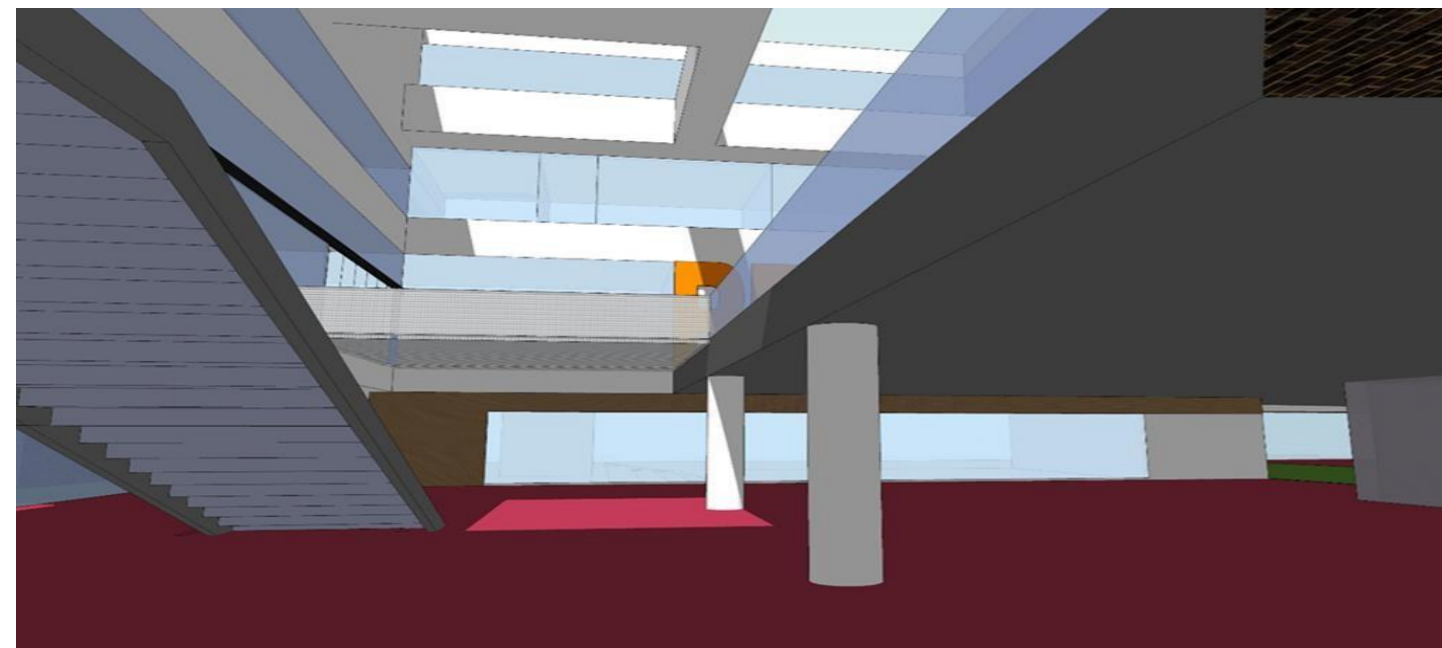
• Design and Supervision



# Hospital



- Investment: 100 M€
- New Construction Surface Area: 36.000 m<sup>2</sup>
- Renovation Surface Area: 27.000 m<sup>2</sup>



- Health
- Hospitals
- Spain
- Building
- Design and Supervision

# Hospital of Cabueñes (Asturias)

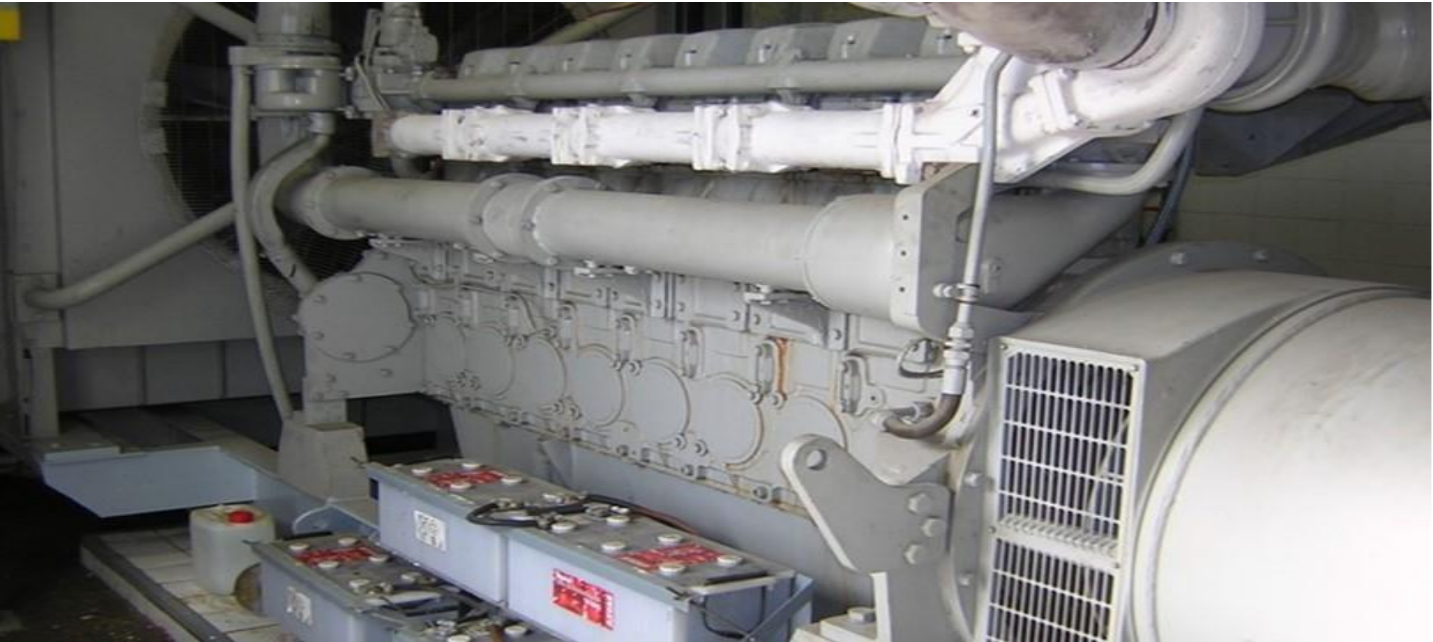


Investment:  
12,1 M€

Surface Area:  
9.200 m<sup>2</sup>

Includes:

- 11 floors
- 19 Operating rooms
- Building of facilities of 1.471 m<sup>2</sup>
- Energy rating A



- Health
- Hospitals
- Spain
- Building
- Design and Supervision

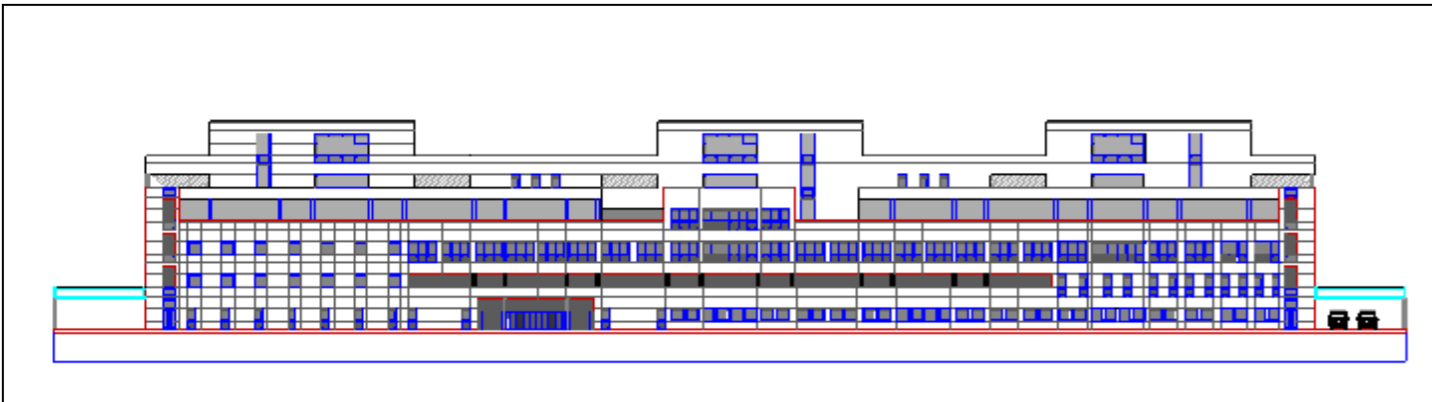
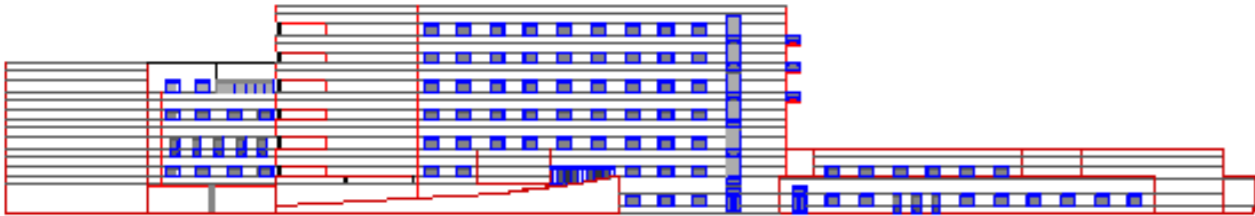
# Hospital of Melilla



▣ Investment:  
40 M€

▣ Surface Area:  
50.218 m<sup>2</sup>

Includes:  
▣ 245beds



- Health
- Hospitals
- Spain
- Building
- Design and Supervision

# Reina Sofía University Hospital of Córdoba



Investment:  
57,8 M€

Surface Area:  
200.000 m<sup>2</sup>

Includes:

- Maternal-infant Hospital of 24.000 m<sup>2</sup> and 221 beds
- Surgical Hospital of 70.000 m<sup>2</sup> and 1.000 beds



- Health
- Hospitals
- Spain
- Building
- Design and Supervision

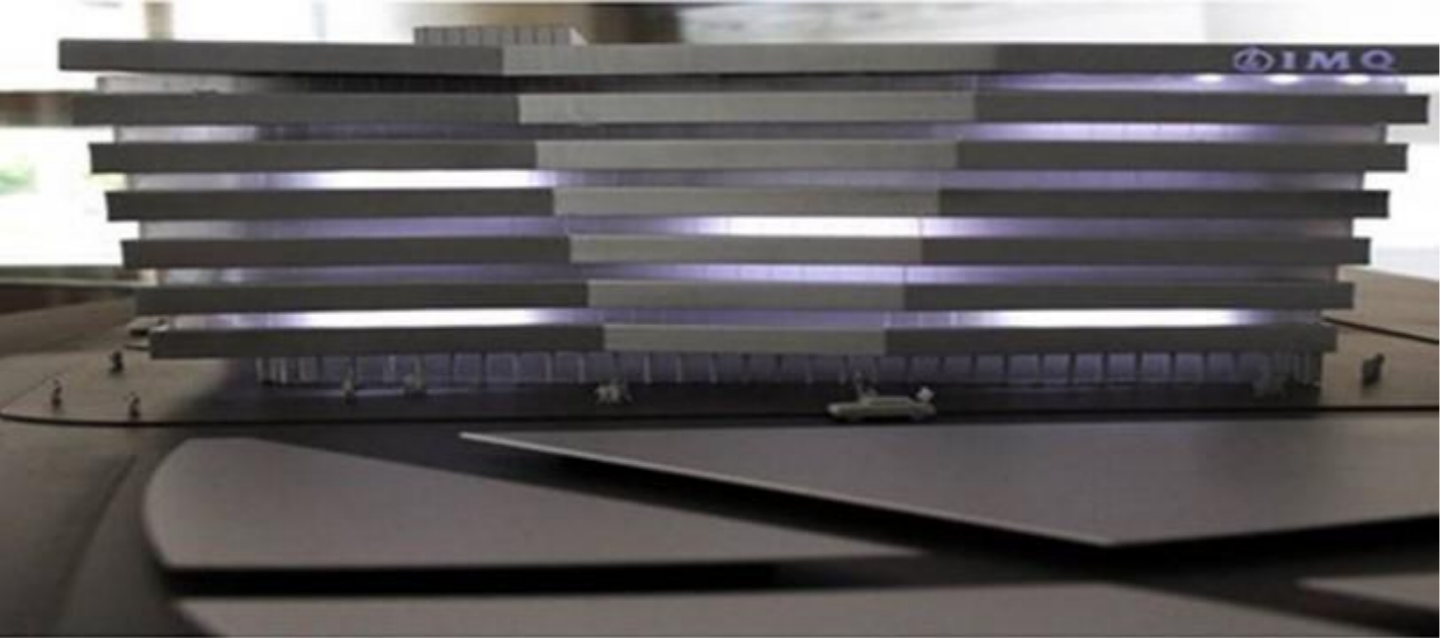
# IMQ Zorrotzurre Clinic (Bilbao)



Investment:  
43 M€

Surface Area:  
43.839 m<sup>2</sup>

Includes:  
157 beds



- Health
- Hospitals
- Spain
- Building
- Design and Supervision

# Gregorio Marañón Hospital (Madrid)



□ Investment:  
157 M€

□ Surface Area:  
194.000 m<sup>2</sup>

Includes:  
□ 1.351 beds



- Health
- Hospitals
- Spain
- Building

• Design and Supervision

# Costa Hospital in Burela (Lugo)



▣ Investment:  
6 M€

▣ Surface Area:  
11.200 m<sup>2</sup>

Includes:  
▣ 200 beds



- Health
- Hospitals
- Spain
- Building
- Design and Supervision

# Hospital of Salamanca



Investment:  
213 M€

Surface Area:  
177.752 m<sup>2</sup>

Includes:  
552 beds



- Health
- Hospitals
- Spain
- Building
- Design and Supervision



# Son Espases University Hospital (Palma de Mallorca)



Investment:  
635 M€

Surface Area:  
237.345 m<sup>2</sup>

Includes:  
819 beds

- Health
- Hospitals
- Spain
- Building
- Supervision



# Baix Llobregat Regional Hospital (Barcelona)



▣ Investment:  
61 M€

▣ Surface Area:  
46.512 m<sup>2</sup>

Includes:  
▣ 328 beds



- Health
- Hospitals
- Spain
- Building
- Supervision

# Puerta de Hierro Hospital in Majadahonda (Madrid)



▣ Investment:  
219 M€

▣ Surface Area:  
172.263 m<sup>2</sup>

Includes:  
▣ 860 beds



- Health
- Hospitals
- Spain
- Building
- Supervision

# General University Hospital of Murcia



Investment:  
84,9 M€

Surface Area:  
94.501 m<sup>2</sup>

Includes:  
400 beds



- Health
- Hospitals
- Spain
- Building
- Supervision

# Mar Menor Hospital (Murcia)



Investment:  
67,8 M€

Surface Area:  
57.960 m<sup>2</sup>

Includes:  
413beds



- Health
- Hospitals
- Spain
- Building
- Supervision

# Infanta Leonor de Vallecas Hospital (Madrid)



▣ Investment:  
72 M€

▣ Surface Area:  
110.812 m<sup>2</sup>

Includes:  
▣ 325 beds



- Health
- Hospitals
- Spain
- Building
- Supervision

# Tajo Hospital (Madrid)



Investment:  
35,2 M€

Surface Area:  
80.169 m<sup>2</sup>

Includes:  
116beds



- Health
- Hospitals
- Spain
- Building
- Supervision

# New Hospital of East Lima Vitarte



Investment:  
56 M€

Surface Area:  
14.232 m<sup>2</sup>

Includes:  
155 beds



- Health
- Hospitals
- Perú
- Building
- Supervision



# Western Hospital of Kennedy in Bogotá



Investment:  
35 M\$

Surface Area:  
12.000 m<sup>2</sup>

Includes:  
191 beds



- Health
- Hospitals
- Colombia
- Building
- Intervention



[www.gocsa.es](http://www.gocsa.es)



**GOC**

Consulting and Engineering

[www.gocsa.es](http://www.gocsa.es)



**GOC**

Consulting and Engineering